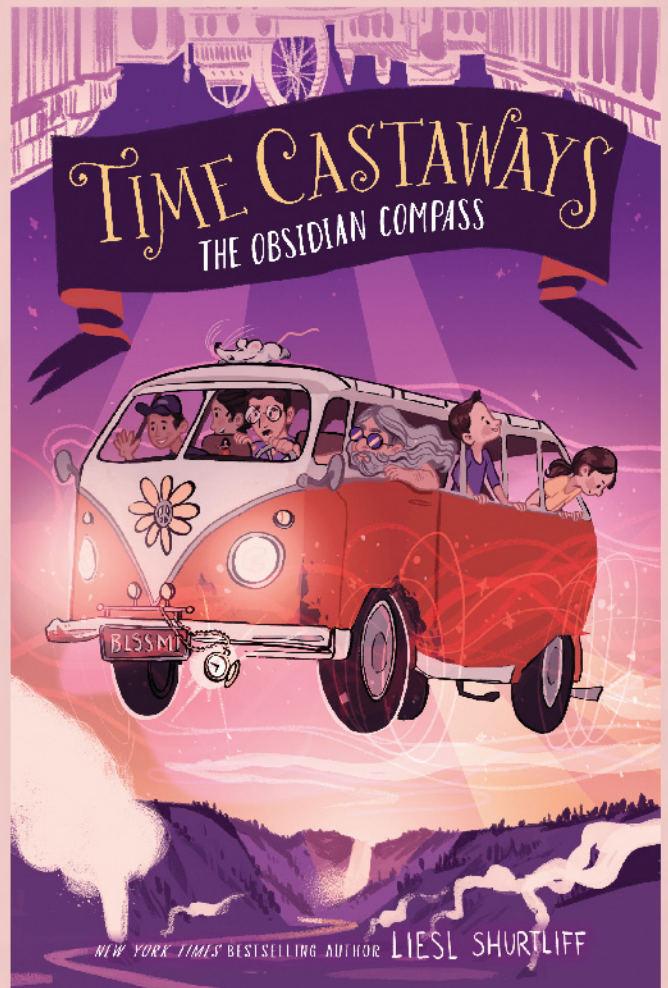
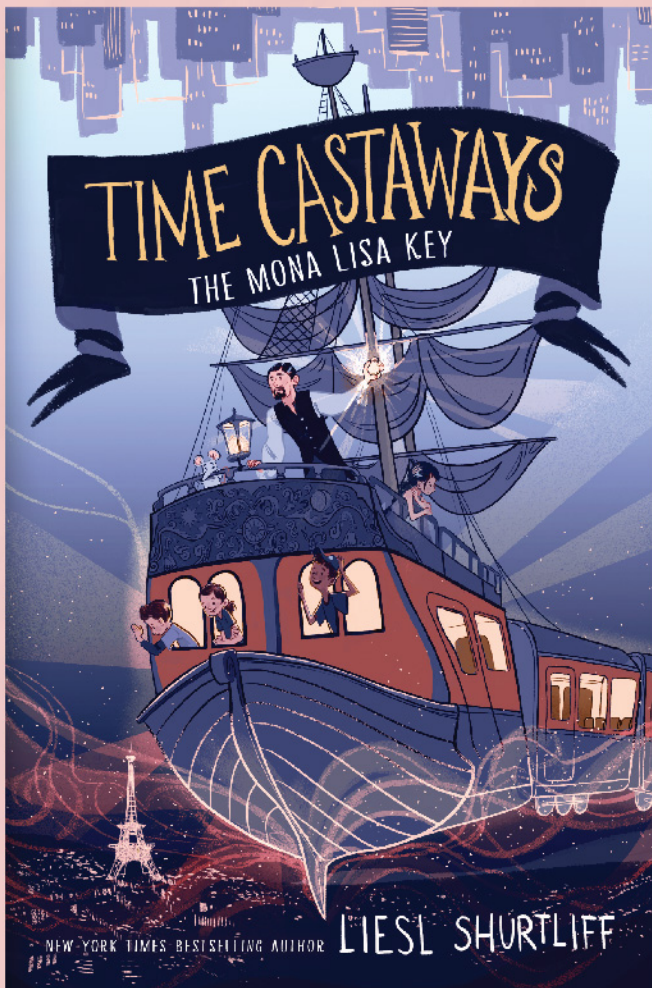


# TIME CASTAWAYS

## EDUCATOR'S GUIDE



Includes common core standards correlations



HarperCollinsPublishers



## ABOUT THE SERIES

Mateo, Ruby, and Corey Hudson's parents don't have too many rules. It's the usual stuff: Be good. Do your homework. And never ride the subway without an adult, EVER. But when the siblings wake up late for school, they have no choice but to break a rule. The Hudson siblings board the subway in Manhattan and end up on a frigate ship in Paris...in the year 1911.

As time does tell, the Hudson family has a lot of secrets. The past, present, and future are intertwined—and a time-traveling ship called the *Vermillion* is at the center. Racing to untangle the truth, the kids find themselves in the middle of one of the greatest art heists of all time. And the adventure is just getting started.

## ABOUT THE AUTHOR

Liesl Shurtliff is the New York Times bestselling author of the *(Fairly) True Tales* series and the *Time Castaways* series. When she writes, Liesl likes to wander back to her childhood and gather the magic that remains so she can share it with children everywhere. Books in her *(Fairly) True Tales* series have been named to over two dozen state award lists and have won many awards including a Children's Book Award from the International Literacy Association. A native of Salt Lake City, Utah, Liesl has called Chicago home for fifteen years. She and her husband have four children who have inspired many characters in Liesl's books, both hero and villain.



# DISCUSSION QUESTIONS

## Point of View

Most of the time in *The Mona Lisa Key*, we see things from the Hudsons' point of view – mostly Mateo's. But we also see another point of view from time to time. Whose is it? And what does switching points of view like this bring to the story?

CCSS.ELA-LITERACY.RH.6-8.6 and CCSS.ELA-LITERACY.RL.6.3  
and CCSS.ELA-LITERACY.RL.5.6

## Time Period

The Hudson children get to experience different points in history as they journey on the time-traveling ship, the *Vermillion*. Which historical period interests you most? What do you think are some positive and negative aspects about that time period?

## Time Period and Location Culture

All the pirates on the *Vermillion* ship come from earlier time periods. Compare and contrast two or more characters from different time periods and locations. What are the differences in their speech, manners, beliefs, and education?

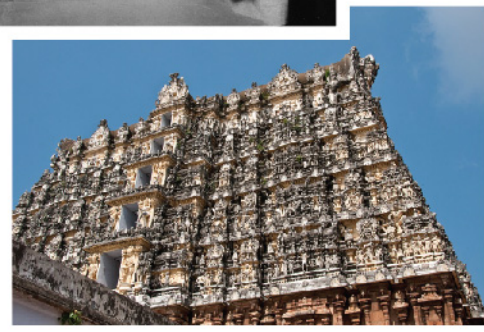
CCSS.ELA-LITERACY.RL.5.3



## Technology

Captain Vincent has a very special compass to help the *Vermillion* get places. Most compasses aren't magic, but they must have seemed like magic when they were first invented. Do you know how normal compasses work? They are just one kind of technology that humans have used over the years to find our way around. Can you think of others? What new technologies do we have today to help us get places, and how do they change how we live?

# DISCUSSION QUESTIONS



## Sourcing and Fact Checking

Several historical events, places, and people appear throughout the *Time Castaways* series. Here's a list of a few examples:

### *Book 1*

- The Metropolitan Museum of Art, New York City, New York
- The 1911 theft of the Mona Lisa from the Louvre Museum in Paris, France
- Queen Elizabeth I at Richmond Palace in 1693
- The treasure vaults at the Padmanabhaswamy Temple in Kerala, India

### *Book 2*

- Henry Hudson, the explorer
- The 1893 World's Colombian Exposition, Chicago, IL
- Annie Oakley
- Yellowstone National Park and Old Faithful

Find at least three sources about one of these places, events, or people. In what ways did the author stick to the facts and where did she take liberties?

CCSS.ELA-LITERACY.RH.6-8.1 and CCSS.ELA-LITERACY.RH.6-8.8 and  
CCSS.ELA-LITERACY.CCRA.W.7 and CCSS.ELA-LITERACY.CCRA.W.8



## Museum History

Mateo, Ruby, and Corey's parents work at the Metropolitan Museum of Art in New York City. The first museum ever was the Ashmolean Museum in Oxford, England, which opened in 1683. Why do you think humans started building museums? If you could build a museum, what would it be a museum of, and why?



# ACTIVITIES

## Time-Mind Benders

In *Time Castaways* there is always a question of what will happen if characters interfere with events outside their own timelines. Can they change the past? If so, what will happen in the future? Write your own time-travel story! Send your character to the past. Research that particular time in history and the events that took place, then place your character in the midst of it. What happens? What can they do? What can they not do? Try different cause and effect outcomes and see what you like best.

CCSS.ELA-LITERACY.CCRA.W.10

## Map-Makers

Mr. Hudson is obsessed with maps and says that “a good map could tell more about ancient civilization than novel-length recorded history.” Have you ever drawn a map? Try mapping your home, neighborhood, or school. What information would you need to make the map accurate? Why is accuracy important in maps?



## Home or Class Museum

The Hudsons' first stop on the Vermilion is the *Mona Lisa* by Leonardo da Vinci, which is kept in the Louvre Museum in Paris. Here is a sample museum card for the *Mona Lisa*:

**Title: Mona Lisa (La Joconde)**

**Creator: Leonardo da Vinci (born 1452, died 1519)**

**Material(s): Oil on canvas**

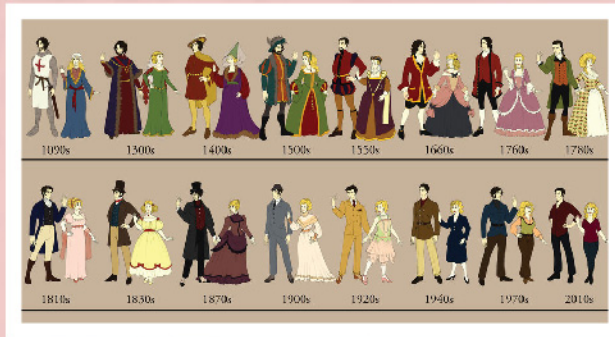
**Country and date of origin: Italy, 1503**

Try creating one of your own - for a famous object, or maybe an everyday item you can find in your home, or even something you're wearing right now. Your classroom could create its own class museum!

# ACTIVITIES

## Era Costume Party

Brocco is the ship's weapons and disguise master. He is tasked with making sure the crew is dressed appropriately for any given time period. Invite your students to dress in a different time period. Have them share the significance or purpose of any given piece of clothing (i.e. bonnets, corsets, garters, suspenders) Have an era costume parade! (Perfect for a Halloween activity!)



## Time Musings

The British Queen Elizabeth we meet in *The Mona Lisa Key* was a real historical figure and was the second woman to sit on the English throne. She is rumored to have said on her deathbed: “All my possessions for a moment of time.” What do you think she meant by this? People have a lot of saying about time. Here are a few famous ones:

“Time flies over us, but leaves its shadow behind.” —Nathaniel Hawthorne

“The trouble is, you think you have time.” —Buddha

“How did it get so late so soon?” —Dr. Seuss

“Those who make the worst use of their time are the first to complain of its brevity.” —Jean de La Bruyère, *Les Caractères*

“Time is the longest distance between two places.” —Tennessee Williams, *The Glass Menagerie*

“A man who dares to waste one hour of time has not discovered the value of life.” —Charles Darwin

“Time is a created thing. To say ‘I don’t have time,’ is like saying ‘I don’t want to.’” —Lao Tzu

“You may delay, but time will not.” —Benjamin Franklin

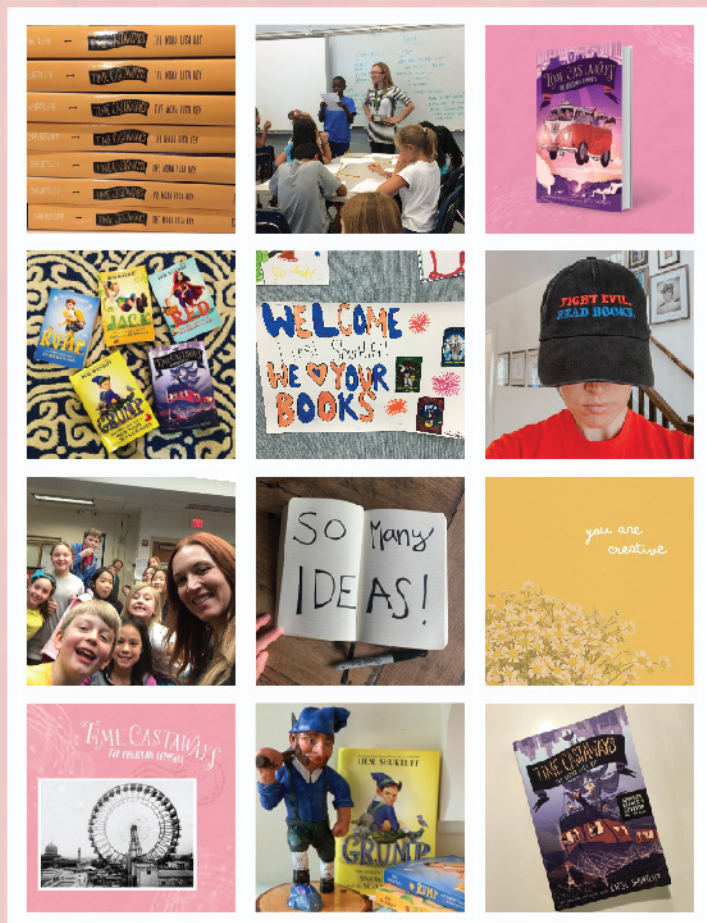
“Time is an illusion.” and “The only reason for time is so that everything doesn’t happen at once.” —Albert Einstein

“Time is the most valuable thing a man can spend.” —Theophrastus

“The key is in not spending time, but investing it.” —Stephen R. Covey

Pick one and write about it. What do you think they mean? What does time mean to you? How do you think it can work for or against us?

# FOLLOW LIESL



@lieslshurtliff

twitter

instagram

facebook

Tag Liesl in your posts  
about *Time Castaways*!